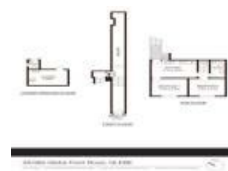


365 Glebe Point Rd, Glebe, NSW 2037

Sold - \$3,478,100

House 11  4  2 



First time offered in 40 years! Mixed use Block

A fantastic opportunity to acquire a mixed use building in desirable Glebe Point location.

Key features:

- 1 x 4 bedroom apartment - residential
- 2 x 3 bedroom + Study apartments - residential
- 1 x 1 bedroom apartment - residential
- 1 x Retail Shop - Tenant has been in place for 23 years
- 1 x Double Lock Up Garage
- Rear lane access
- New wiring throughout
- Close to 7 metre frontage
- Land area: approx. 272sqm
- 2.5km (approx.) from Sydney CBD
- Current gross return of \$158,600 per annum
- Potential to significantly increase return with refurbishments
- Set to benefit from future developments and infrastructure of the bay's precinct master plan
- Located minutes from harbour front parklands, shops and fast city transport including light rail

Auction On Site 30/11/19 @ 11.15am

Open for Inspection

By Appointment.

Listed By



Anthony Portelli
Phone: (02) 9660 1224
Mobile: 0418 235 121

